

Data Sheet

Universal Dry Fix Verge

Non-handed verge units for flat & profiled tiles

Application

- Dry fix verge to pitched roofs with flat and profiled tiles
- New build and refurbishment projects
- Most pitched roof types from 15-55°

Product Features & Benefits

- Simple and easy to install, mortar free
- Non-handed units to be interchangeable between LH & RH verges
- Lightweight and resistant to corrosion and decay
- Protects the verge from exposure to wind driven rain
- Meets requirements of BS8612
- Suitable for batten gauges between 265-340mm
- Ridge and eaves units available

Materials

Manufactured in UV stabilised polypropylene (PP)

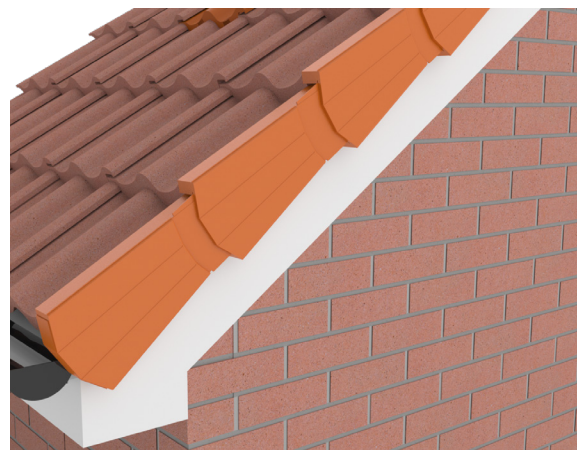
Installation Guide

- Install the tile battens with a 50mm overhang over the brick or barge board.
- Lay tiles and set flush with the battens.
- Starting at the bottom edge of the roof, insert the starter piece into the front edge of the verge unit.
- Position and mark out the starter piece on the fascia and barge board.
- Remove and then mechanically fix the starter piece in position through the hole positions in the grid.
- Slide the first verge unit over the tile at the eaves and locate into the starter unit.
- Fit dry verge under the head laps to ensure the unit is firmly held in place.
- Screw the unit through the hole grid into the batten (optional end grain fix bracket available)
- Slide the next verge unit into the upper edge of the first unit and press firmly to the tile.
- Fit under the head laps to ensure the unit is firmly held in place.
- locate and fix dry verge unit through the top grid into the batten (optional end grain fix bracket available)
- Continue and repeat the process along the barge board/gable up to the ridge
- When the other side verge is completed to the apex, secure the ridge end cap to the ridge batten over the top of the dry verge pieces (the verge units may need to be trimmed at the apex).

Product Range

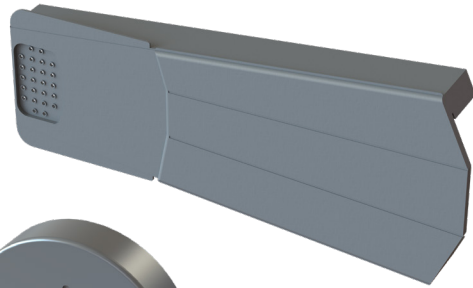
Description	Colour range*				Pack Qty
Universal dry fix verge unit	Terracotta	Brown	Anthracite/Grey	Black	60's
Half round ridge cap	Terracotta	Brown	Anthracite/Grey	Black	ea
Angled ridge cap	Terracotta	Brown	Anthracite/Grey	Black	ea
Eaves starter unit	Terracotta	Brown	Anthracite/Grey	Black	20's
Batten end grain fix bracket	-	-	-	-	tba

*Stipulate colour required when ordering



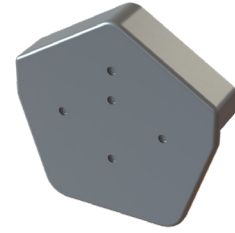
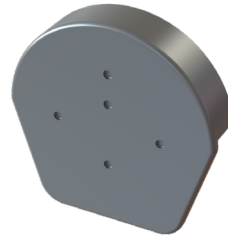
- **Universal dry fix verge unit**

Size - L410mm x H170mm x W50mm



- **Half round ridge cap**

Size - L260mm x H245mm x W50mm

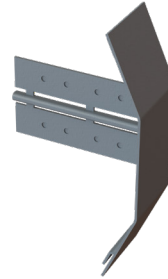


- **Angled ridge cap**

Size - L260mm x H245mm x W50mm

- **Eaves starter unit**

Size - L105mm x H155mm x W50mm



- **Batten end grain fix bracket**