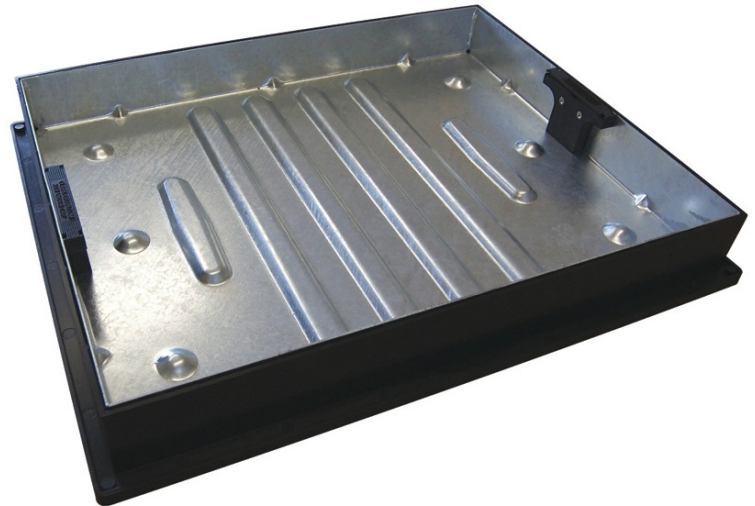


Data Sheet

Plastic Frame Block Pavior

- Intergrated lifting handles each tested to 60kg of direct lift
- Recommended for landscaping and driveways
- Galvanised tray to BS EN 1461:2009
- Moulded grouting flange



Product Weight (Kg)	14.5
Clear Opening	600 x 450
Overall Dimensions	697 x 545 x 78
Cover Material	Mild Steel to EN 10346 2015 DD11
Frame Material	Polypropylene (Grade AP9)
Load Rating	10 tonne GPW
Load Rating Data	25kN held for 30 seconds
FACTA Clauses	7.0, 7.2, 7.2.1, 7.2.3
Application	Driveway loading
Locking	None

