

Data Sheet

Hifloweep

Ultimate concealed wall weep offering maximised drainage by integrating an anti-mortar blockage design.

Application

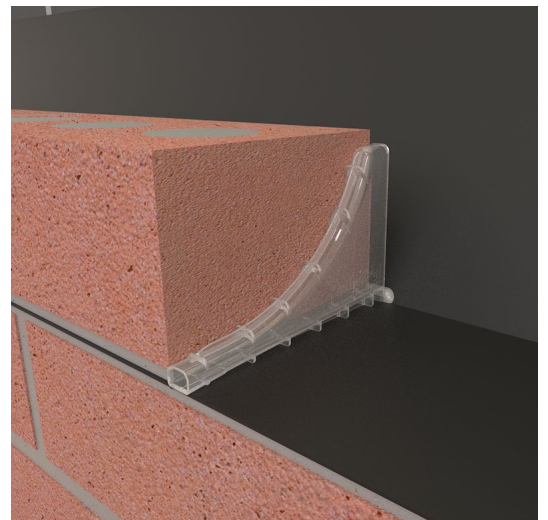
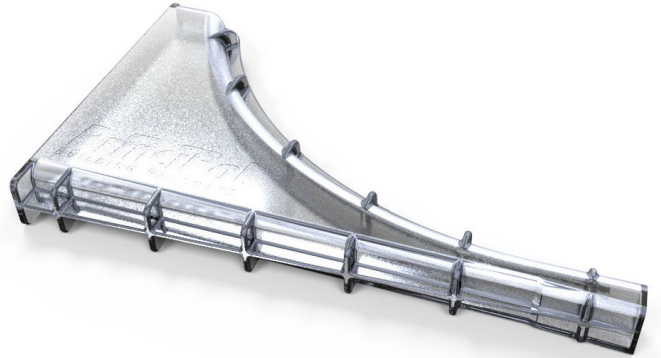
- To form unobstructed cavity wall drainage path in masonry perpend joints
- Suitable for cavity drainage below dpc at ground level
- Ideal for draining abutment & perimeter cavity trays to give concealed weep outlets for above lintels, stop socks, brick supports & through wall ventilators

Product Features & Benefits

- Ultimate level of concealment with small low visibility outlet
- 4mm outlet to meet BS5250 to reduce the entry risk of large nest building insects
- Maximised drainage flow with a gradient fall of 1:29 (2° fall angle)
- UK patent pending
- Anti-mortar blockage design
- Encourages free drainage and self cleaning
- Wind baffle formed by gradient design
- Inlet design reduces the risk of blockage
- Straight unobstructed drainage path
- Full height perpend inlet to overcome mortar build up within the cavity
- Mortar anchor ribs to reduce slumping when filling perpend joints
- Drip bars and gradient to minimise water tracking from outlet
- Clear plastic as standard with colours available to order
- Boxed in 50's
- Overall size 102mm x 65mm x 10mm

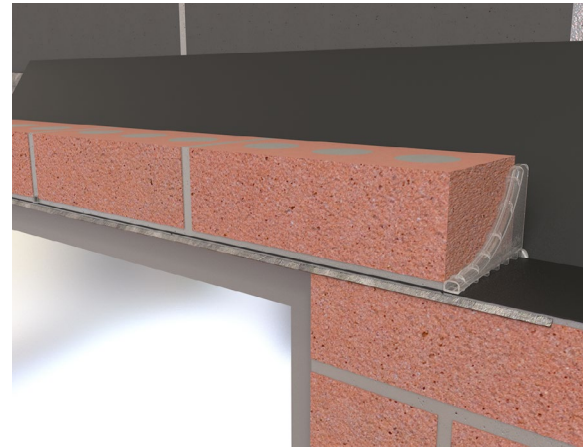
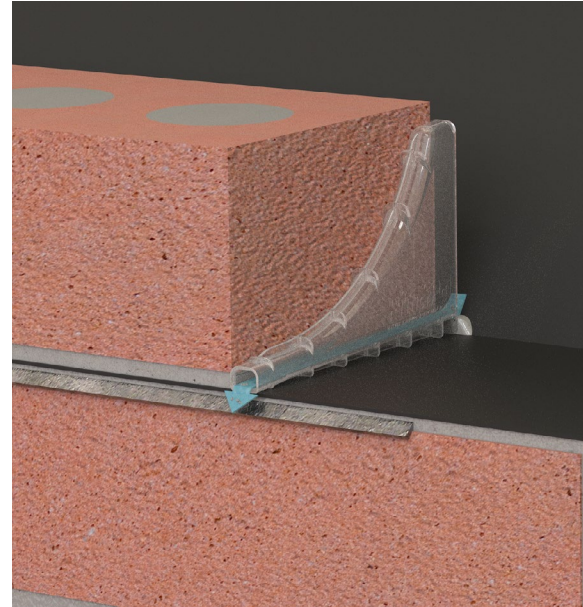
Materials

- Injection moulded grade Polypropylene
- Clear as standard with colours available
- Packaging 260mm x 110mm x 80mm



Technical Background

- Weep holes are drainage holes left in the exterior wall of a cavity wall construction to allow water that has entered the cavity to freely drain back outside. To reduce the visual impact, minimise the entry risk of large nest building insects and remove the risk of unwanted pointing to a fully open perpendicular joint, it has been an industry norm to install proprietary wall weep ducts. The Hifloweep has been designed to form an unobstructed drainage path with the ultimate level of concealment and maximum drainage flow.
- Cavity wall weeps are to be installed at regular linear intervals in a masonry wall to allow drainage above ground level and fitted within dpc cavity trays in areas where a cavity has been bridged. Cavity wall weeps are positioned in perpend joints and bedded in mortar,
- For this reason the Hifloweep has been designed with an elevated cavity side opening incorporating a 2% gradient fall running to outlet that will encourage both liquids and solids to drain freely to minimise the risk of blockage.



Installation Guide

- Hifloweep's are fitted at 900mm centres within perimeter cavity tray applications and above gas barrier systems, abutments, cavity stop socks and brick support cavity trays and other continuous dpc cavity trays.
- Hifloweep's are fitted at 450mm centres at openings; including lintels, through wall ventilation, meter box's with a minimum of two per opening to meet British Standards and NHBC requirements.
- To be fitted with-in perpendicular joints with the small low visibility outlet to the outer face of a masonry wall and the 65mm inlet to cavity side.
- It is important to maintain a clear mortar free passageway during installation
- For wider wall application we recommend extending the front end outlet with a flexible pipe (10mm) push fitted to seal. (Supplied separately on request)



Product Range

Description	Colour	Height	Width	Length	Pack
HifloWeep	Clear	65mm	10mm	102mm	50's
HifloWeep	Buff	65mm	10mm	102mm	50's
HifloWeep	Terracotta	65mm	10mm	102mm	50's

Additional Colours available to order

