

## Data Sheet

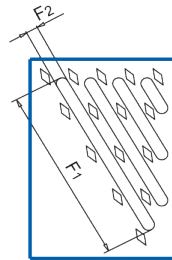
# 100/80 C250 Ductile Iron Heelsafe



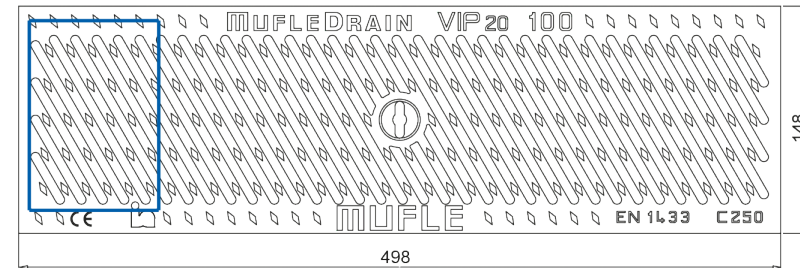
Class C250

## Application

- Parking areas, multilevel parking areas, street side



SLOT  
DETAIL



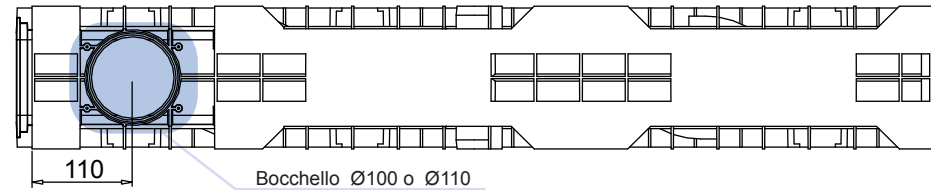
VIEW FROM ABOVE



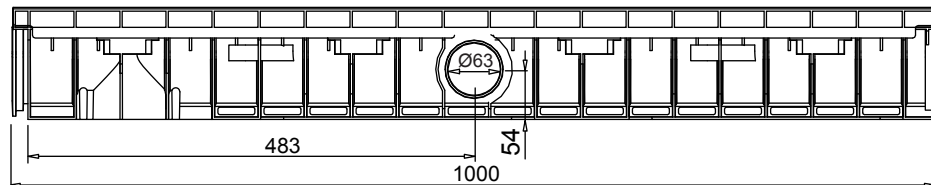
SIDE  
VIEW

## Grating Dimensions

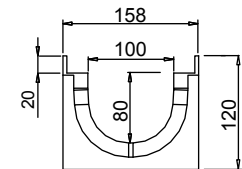
Length (mm)	498
Total width (mm)	148
Total height (mm)	20
Slot height (F1XF2 mm)	91.5 X 6.0
Material	Ductile Iron GJS 500/7 (EN 1563)
Weight (kg)	3.60
Draining surface (dm <sup>2</sup> )	2.10
Fixing system	Tie rod
Surface finishing	Epoxy paint
Resistance (Norm UNI EN 1433)	Class C250



BOTTOM VIEW



LATERAL VIEW



FRONTAL VIEW