

Data Sheet

4ALL Channel - P/P, Galv, Stainless & Ductile Grating

Features

- Click the grating in and out, no screws required
- Designed in accordance with EN 1433
- Easy to assemble
- Quick waterflow drainage
- External ribs provide improved anchoring between Concrete and HDPE and provides better strength and rigidity
- High mechanical and chemical resistance
- Lightweight
- Easy to carry

Channel Dimensions

Length (mm)	1000
External width (mm)	120
External High (mm)	90
Internal Width (mm)	95
Internal High (mm)	80
Outlets	2 x Ø 63 e 1 x Ø 100/110*
Materials	HD-PE
Weight (Kg)	1.60
Drainage section (cm ²)	69.28
Capacity (dm ³ =litres)	6.92

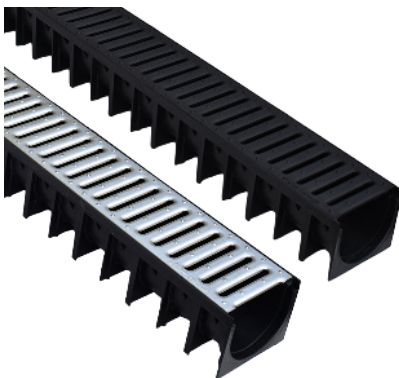
Pallets and Garage Packs

- 150 x 1 metre lengths (including galvanised grating per pallet)
- Also available in garage packs, containing 3 lengths of channel with galvanised grating, 1 bottom outlet and 2 end caps

Application

For the installation of the 4ALL channel with A15 class grating, the trench should be 192 mm high (92 mm for the channel height + 100mm for the concrete laying bed) and 320mm wide (120 mm for the channel width + 200mm for the side flankings).

- 4ALL P/P & Galv



- Garage Pack



- 4ALL B125 ductile grating



- 4ALL Quad connector Galv & P/P



Stop ends

