

Rhinoplast Total Gas Barrier

Total Gas Barrier is a high quality, virgin polymer, reinforced, multi laminate membrane with an aluminium core.

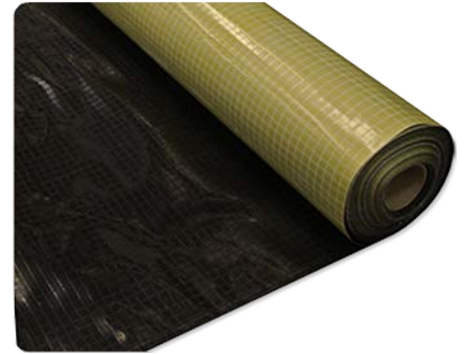
Total Gas Barrier can be used as a hydrocarbon gas barrier in certain situations. The product is used as part of a full Radon/Carbon Dioxide/Methane (CS3/Amber 2) gas protection system and will meet all current legislation as listed below.

Total Gas Barrier prevents the transmission of harmful gases and due to the nature of it's construction, the membrane overcomes problems associated with membranes manufactured from post-consumer recycled waste.

Total Gas Barrier also acts as a damp proof membrane and can be welded.

Under new legislation, requirements may include:

- Independent verification supported with photographic documentation.
- Integrity testing in certain gas regimes. i.e upper levels of CS3/Amber 2.
- Quality assurance measures to be applied as per watchpoints in BRE 211/414
- The use of proprietary membranes (independently tested) with robust jointing.
- The use of pre-formed corner, threshold and pipe cloaks.



Product Specification

Roll Size: 2 x 50m

Test name	Test Method	Parameter	Value	Unit
Composition	ISO 2286-2	Coex Foil	138	gr/m ²
		PE	15	gr/m ²
		PP Fabric	13	gr/m ²
		PE	25	gr/m ²
		Aluminium 20µm	55	gr/m ²
		Coex Foil	138	gr/m ²
		PE	15	gr/m ²
		PE	25	gr/m ²
		Total Weight	424	gr/m ²

Test Certificate

Test name	Test Method	Parameter	Value	Unit
Total Weight	NEN 1849-2	Total Weight	424	gr/m ²
Tensile Strength	NEN 12311	Elongation CD	20,6	%
		Strength CD	488	N/50mm
		Elongation MD	19,4	%
Nail Tear	NEN 12310	Strength MD	559	N/50mm
		Tear Strength CD	504	N
Thickness	ISO 2286-3	Tear Strength MD	432	N
		Overall Thickness	0,56	mm
		Minimum Thickness	0.4	mm

Complies with BS8485:2015

Test	Value	Pass/Fail
Thickness	0.4mm	Pass
Single wound (No folds)		Pass
Methane Gas Transmission Test Method EN15105-1	< 40ml/24hr/m ²	Pass

The performance of gas membranes is heavily dependent on the quality and design of the installation, resistance to damage after installation and the integrity of the joints (BS 8485)

Advantages

- Suitable for use as a proprietary gas barrier in Amber 2 and CS3 situation
- 2m wide single-wound membrane
- Extremely tough and resistant to tear and puncture
- Can be used as hydrocarbon vapour barrier in certain situations

Installation Details

Gas Protection systems should be installed in accordance with current guidance including BRE 211/414, CIRIA C665 & BS8485 and should provide a complete system to cover the whole footprint of the building.

The membrane should be laid on a smooth or sand blinded surface free from voids/hollows and objects which may damage the membrane. membrane should be jointed with Double sided Gas Tape with 150mm overlap and then sealed down with a Lap Tape. The membrane should be clean, dust-free and dry. Gas Membranes should provide continuity through walls by sealing and jointing to the DPC/cavity tray formed with GR DPC. Preformed details including internal/external corner units, top hat units, partition wall tray units and door reveal cloaks are available to complement the DPC providing added integrity to the system. Damaged or punctured areas should be patch repaired utilising the above method for jointing. Depending on subsequent covering, protection may be required to protect the system from puncture. Should integrity testing or a validation report be required, this should be factored in prior to the concrete/screed pour.

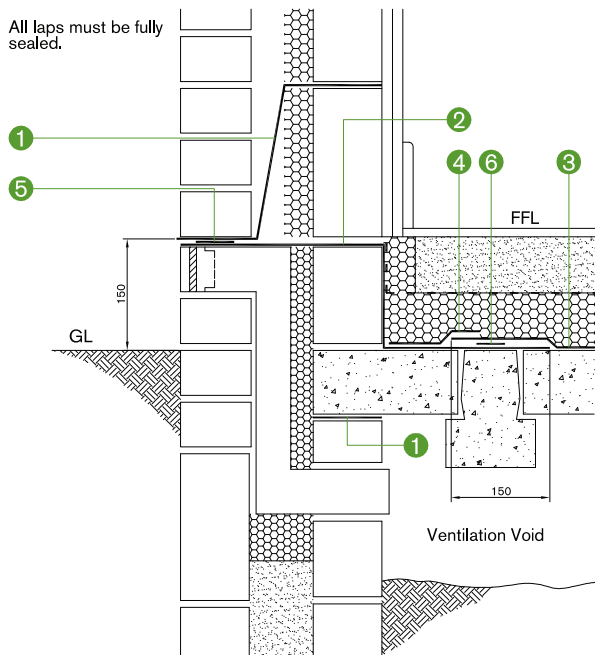
Ancillary Products

- Jointing system. Gas and Lap Tape
- GRM. Self adhesive gas barrier
- Geo-Vent + venting components
- Liquid Vapour Membrane

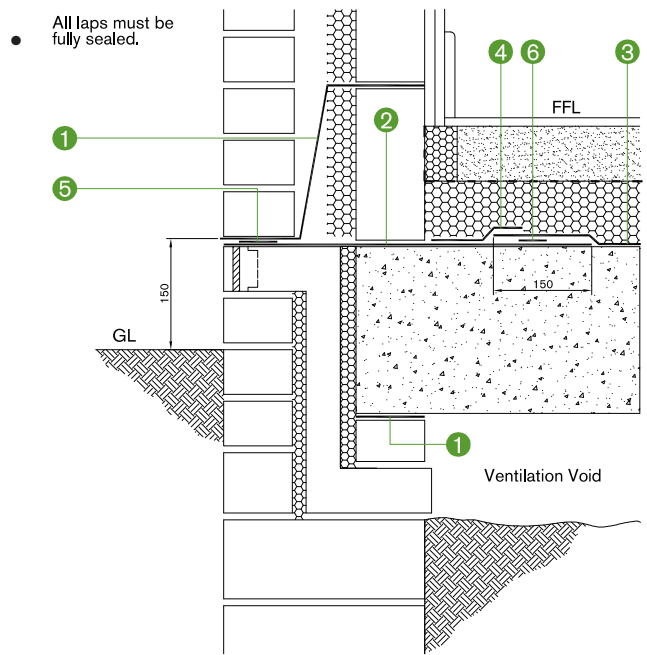
- Top Hat Pipe Cloaks
- GR DPC. Gas resistant DPC
- Radon Sump.
- Pre-formed Cloaks. Internal/external corners. Door threshold cloaks. Party wall tray.

See separate data sheet for more information.

Typical Details



- 1) GR DPC
- 2) GR DPC
- 3) Gas membrane to specification
- 4) Lap Tape
- 5) Gas Tape to specification
- 6) Gas Tape to specification



- 1) GR DPC
- 2) GR DPC
- 3) Gas membrane to specification
- 4) Lap Tape
- 5) Gas Tape to specification
- 6) Gas Tape to specification

Typical Details

To ensure that the specified system is capable of meeting the functional requirement of the application and current legislation and guidelines, offer project specific technical support through our team of experienced office and field based operatives.

- Design solutions offering the most cost effective system to comply with current legislation.
- Independent Integrity testing (site based)
- Bespoke systems to overcome difficult situations
- Independent Verification reports (site based)
- Next-day Delivery
- Supply and install service with on-site fabrication/welding