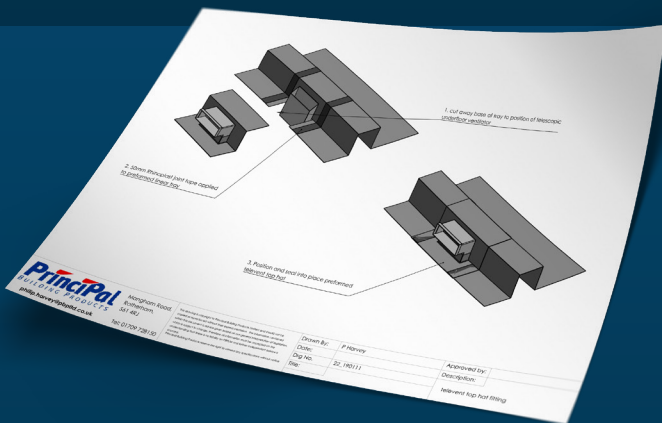


Gas Barrier System Solutions

The Rhinoplast gas barrier system solutions service has been established to provide a complete design service to overcome many problems associated with construction on land associated with a range of hazardous gasses. Principal can offer a full technical support to recommend and design products that can simplify, improve, and accelerate installations to meet site specific gas regimes.

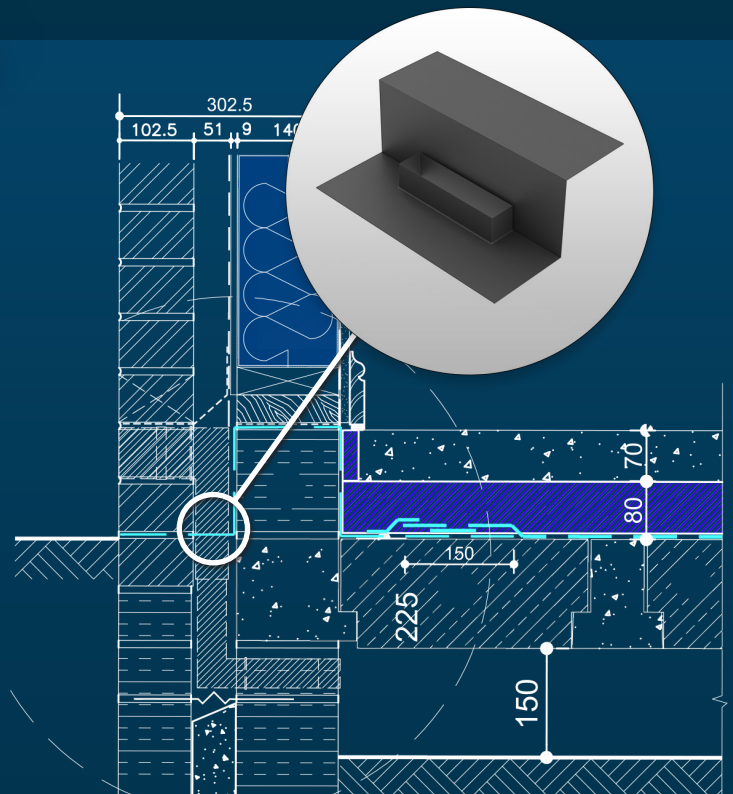
We offer a full plot and site-specific schedule service to ensure full site compliance and all components can be either standard issue or uniquely CAD designed with technical supported on-site visits.



1

Telescopic Vent Top Hat

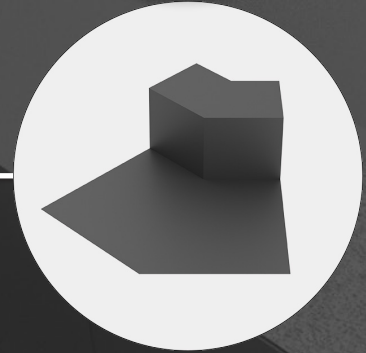
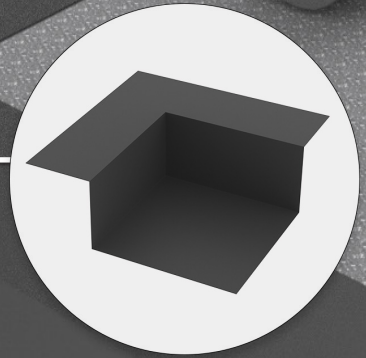
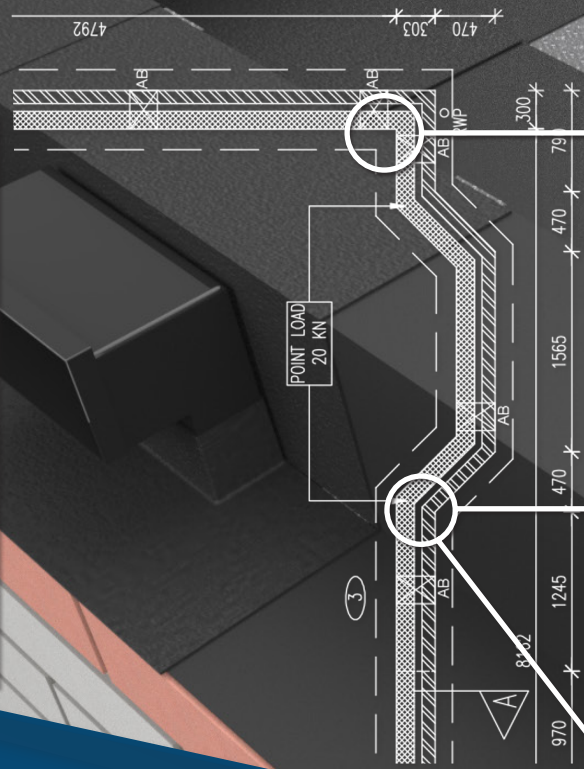
To overcome the need for sealing ventilators which penetrate the cross-cavity gas membrane, we can offer various designs from flat based to cavity tray profiles.



2

Perimeter Corners

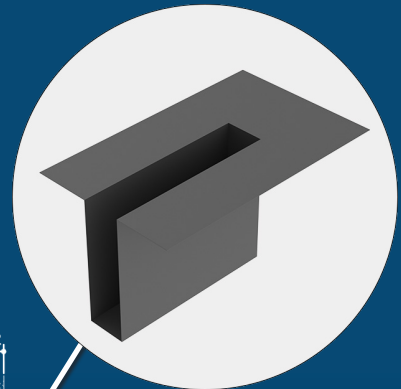
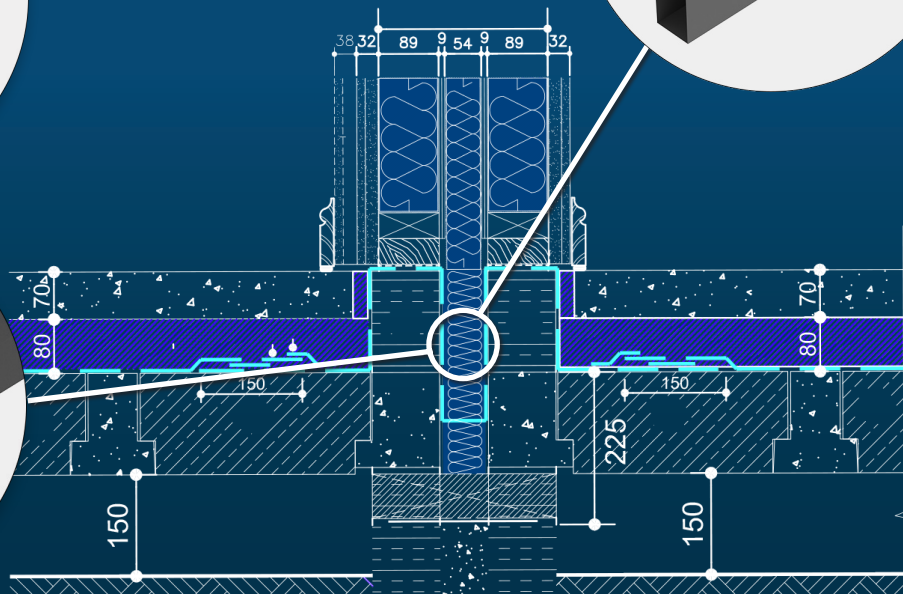
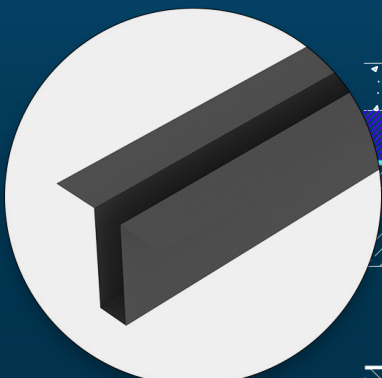
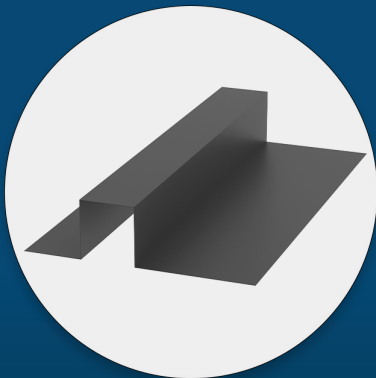
Suitable for all perimeter wall corner junctions to overcome the need for cuts and folds to eliminate gaps in the gas membrane. Design options available to protect either floor slab or cavity side construction. Corners can be supplied to any angle, height, and width in flat or cavity tray profiles.

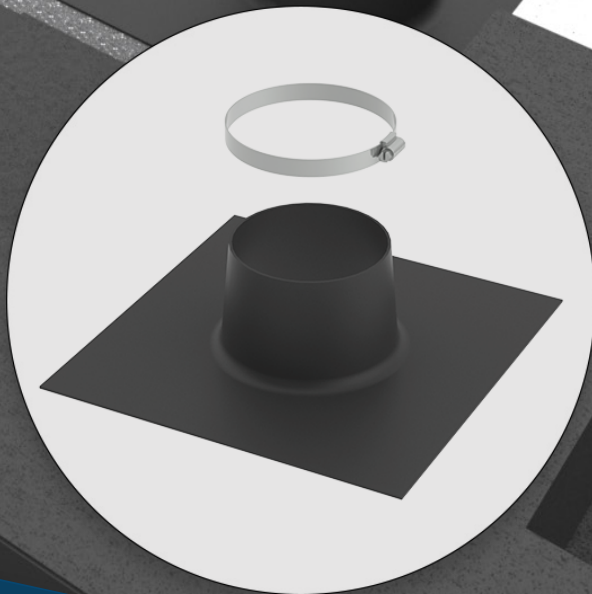


3

Separating & Perimeter Walls

Preformed linear cavity trays and junction pieces will reduce the risk of damaging and detailing gas membranes by allowing quick and easy preformed trays to be positioned. Preformed linear trays will remove the need for difficult folding across cavity wall construction.





5

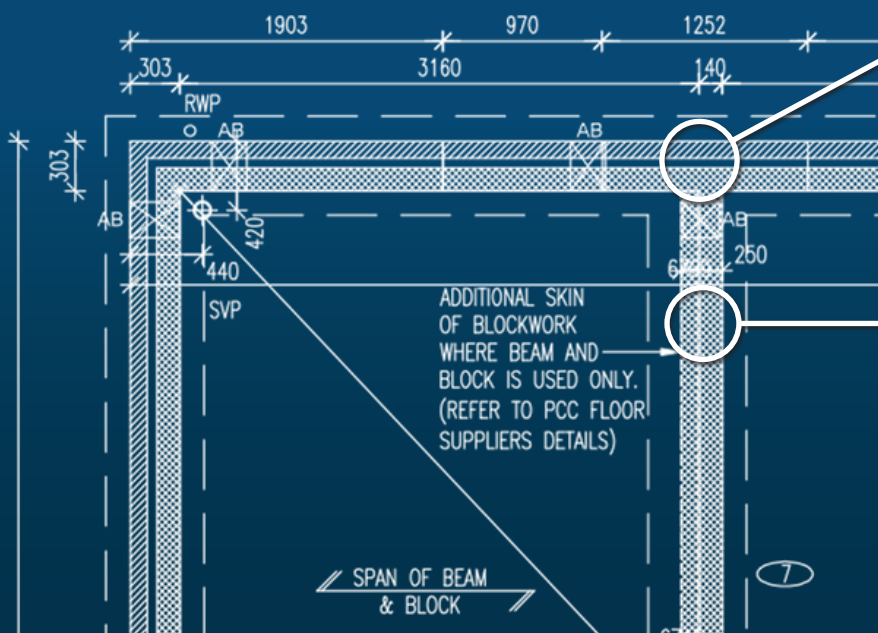
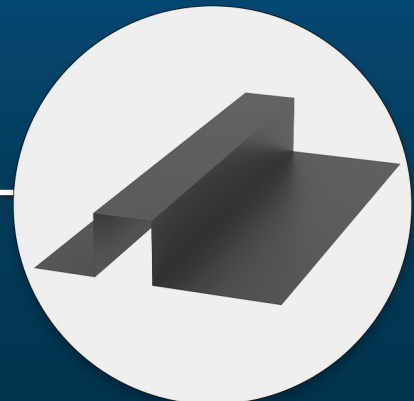
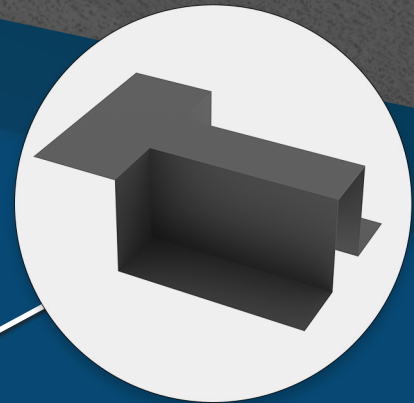
Soil & Service Pipe Top Hats

Full range of top hats available in either rigid or flexible forms with standard sizes of 40mm, 75mm, 110mm, 135mm, 160mm for soil pipe and service penetrations with larger 600mm versions suitable for foundation piling penetrations.

4

Load Bearing Internal Walls

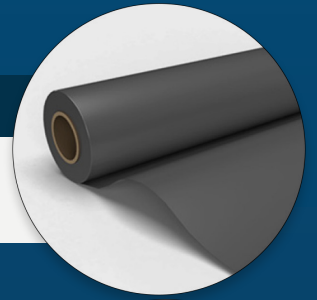
Linear trays and T junctions can be designed for areas such as integral garage load bearing walls.



Gas Barrier Membranes & Ancillaries

Rhinoplast Ultra Radon

A monolithic LDPE barrier designed primarily for use with Radon gas. Fully Radon gas tested and approved by NSAI (IAB) Meets the requirements of BRE211.



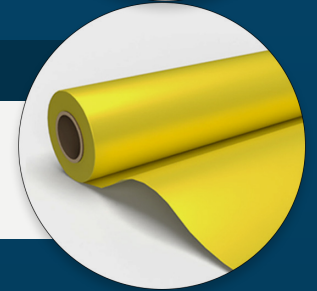
Rhinoplast 400 Extra Radon Barrier

A thicker, tougher and more durable monolithic LDPE barrier designed primarily for use with Radon gas that is Weld-able and suitable for damp proof membrane. Fully Radon gas tested Meets the Requirements of BRE211.



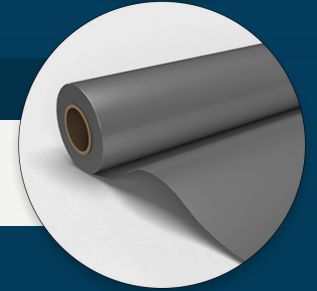
Rhinoplast Super

A monolithic hybrid co-polymer barrier giving excellent performance. Fully tested for Radon, Methane and CO2. Approved by NSAI (IAB) Exceeds the requirements of BRE211. Complies with NHBC Amber 1 installations. CS2 dependant on construction type.



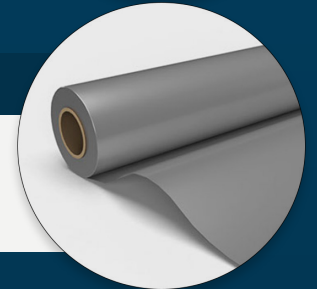
Rhinoplast Amber 2000

A monolithic LDPE barrier. Excellent strength and puncture resistance. Exceeds the requirements of BRE211. Complies with NHBC Amber 1 installations. CS2 dependant on construction type.



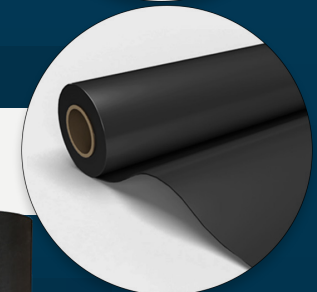
Rhinoplast Evolution Gas Barrier

Rhinoplast Evolution is a high specification co-extruded multi-layer barrier specifically developed for use on construction sites contaminated by Volatile Organic Compounds, Hydrocarbons and other ground gasses such as Methane, Radon and CO2. Complies with BS8485:2015 Table 7 CS2



Rhinoplast Hydrocarbon Barrier

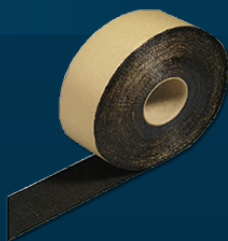
An HDPE membrane designed to withstand the effects of fluid hydrocarbons. Tremendously strong and puncture resistant.



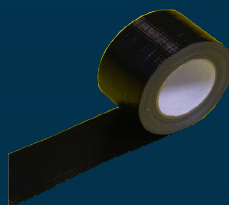
Tapes & DPC



Rhinoplast LT Jointstrip



Rhinoplast Reinforced Detail Strip



Rhinoplast High Tack Girth Tape



Rhinoplast Gas Retardant Co-polymer DPC